

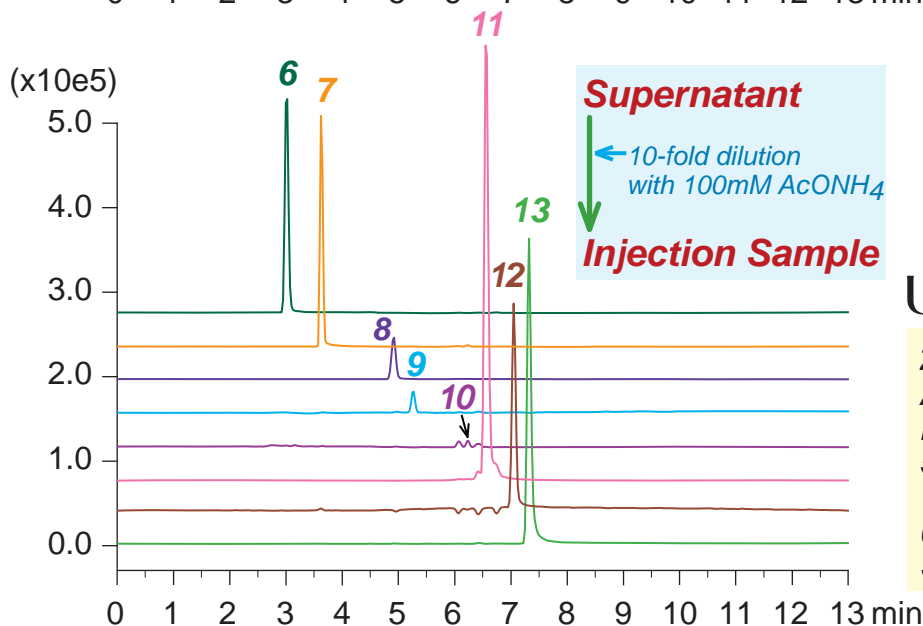
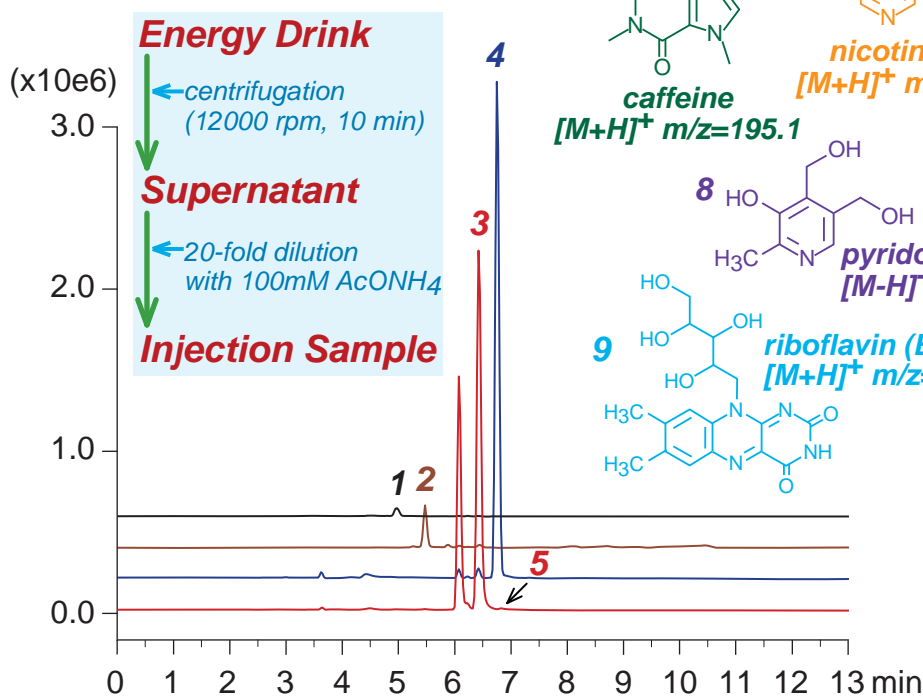
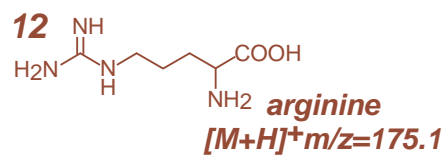
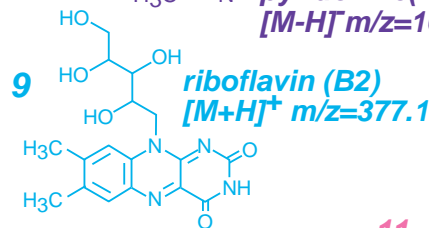
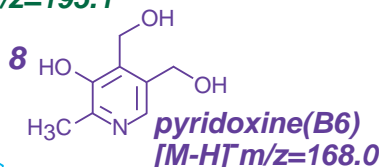
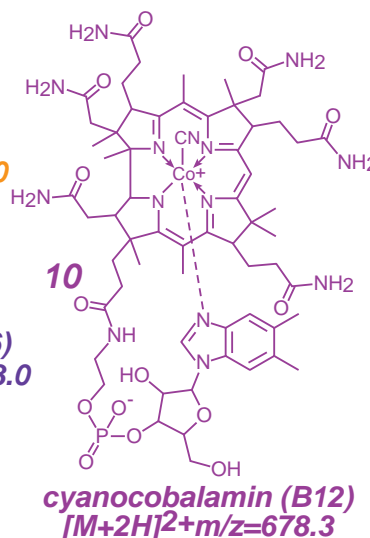
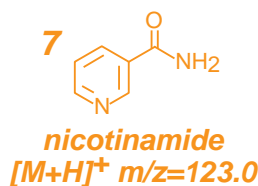
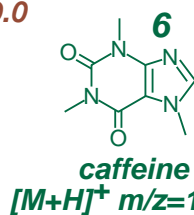
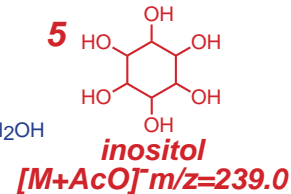
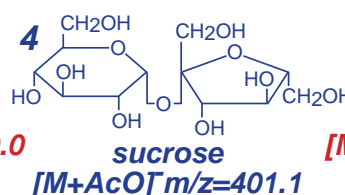
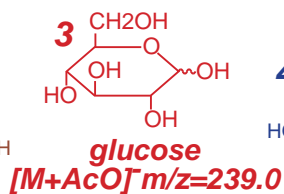
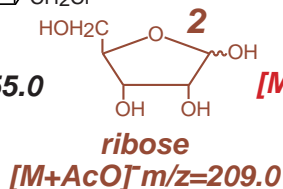
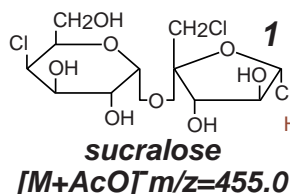
Unison UK-Amino MF

250 x 2 mm

Application

LC-MS: Energy Drink (Brand-ME)

エナジードリンク (ブランド-ME) のLC-MS分析



Unison UK-Amino MF

250 x 2 mm
 A: acetonitrile
 B: 100mM ammonium acetate
 5-100%B (0-10 min)
 100%B (10-13 min)
 0.2 mL/min (6 MPa), 37°C, 1 µL
 Single Quad. MS (ESI)